

STEINBICHLER COMET[®] PHOTOGRAMMETRY

3D DIGITIZING AND
PHOTOGRAMMETRY MEASUREMENTS



Get your complex 3D digitizing projects done more efficiently!

With our new, integrated photogrammetry equipment for the acquisition of 3D reference points, a cost-effective system solution featuring easy handling and high accuracy is now available.

DIRECT SOFTWARE INTEGRATION

In both entry-level and high-end configuration, the direct interface with the digitizing software STEINBICHLER COMETplus allows a highly efficient and time saving measurement process.

PERFECTLY TUNED HARDWARE

High-quality hardware components such as cameras and lenses accompanied by a wide selection of accessories (certified reference bars/crosses, markers, adapter cubes) are perfectly tuned to the complete STEINBICHLER COMET sensor series and are a guarantee for the highest precision.

AFFORDABLE ALL-IN-ONE SOLUTION & OPTIMAL EFFICIENCY

Every system configuration is freely scalable and allows an easy adaptation to any object. The acquisition and matching of single 3D measurements is done in efficient workflows. With the new sensor and photogrammetry packages featuring sophisticated interfaces, easy handling and modular accessory components, Steinbichler offers both technically and economically convincing single-source system solutions.

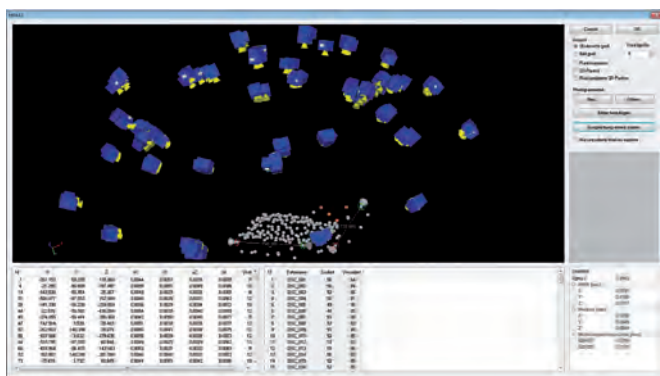
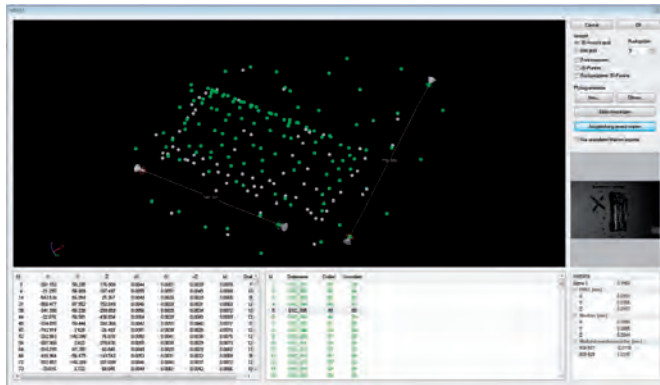




STEINBICHLER COMET[®]

PHOTOGRAMMETRY

3D DIGITIZING AND PHOTOGRAMMETRY MEASUREMENTS



SOFTWARE

- Windows XP 64Bit & Windows 7 64Bit
- Clear and easy-to-use user interface
- Automatic point measurement
- Automatic assignment of scale bars, reference cross and coded markers
- Image display with indication of point ID
- 3D display with indication of camera position and point ID
- Easy data selection in tabular and 3D display
- Adapter measurement for determination of edges, holes, etc.
- Export of points
- Automatic registration of single COMET measurements
- Functions in combination with STEINBICHLER INSPECTplus:
 - Evaluation of adapter measurement
 - Point-to-point surface comparison
 - Deformation analysis

TECHNICAL DATA

- Standard: 12.1 megapixel
High-end: 24.5 megapixel,
each equipped with Zeiss 28 mm
industrial lens and flash device
- Recommended measurement volume:
from 100 x 100 x 100 mm up to 10 x 10 x 10 m

ACCESSORIES

Adapted to customer-specific requirements,
available in various sizes/lengths/configurations:

- Reference crosses
- Reference bars
- Markers
- Magnetic and/or sticker markers
- Adapters



STEINBICHLER OPTOTECHNIK GmbH
Georg-Wiesböck-Ring 12 • 83115 Neubuurn • Germany
fon: +49-8035-8704-0 • fax: +49-8035-1010
sales@steinbichler.de
www.steinbichler.de

International Branch Offices:
USA • BRAZIL • P.R. CHINA • INDIA
FRANCE • PORTUGAL • UK • AUSTRIA • RUSSIA